

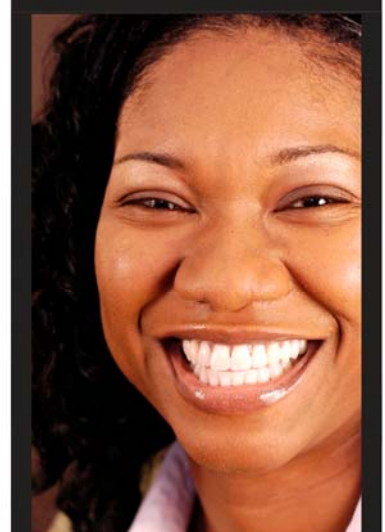
What are the benefits of corporate membership of the Network for Black Professionals?

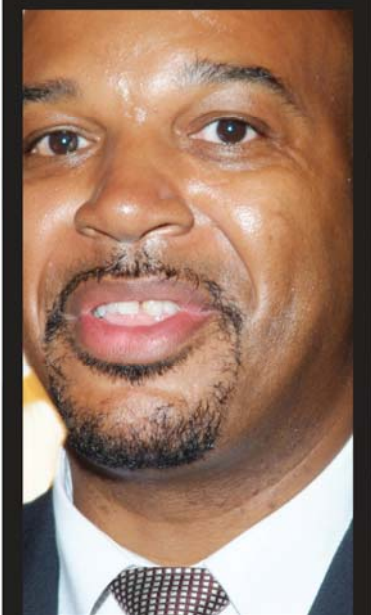
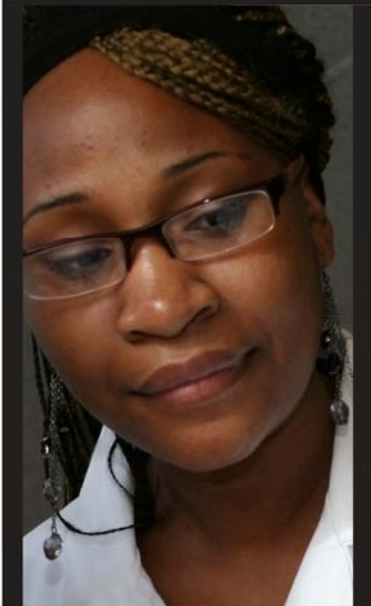
By affiliating to the NBP, your organisation is: -

“

- Supporting both the Moral *and* the Business case for Workforce Diversity in a globalised economy;
- Demonstrating that it “walks the talk” on social justice;
- Supporting the development of practical solutions to under-representation in the workforce;
- Supporting an independent and effective voice for BME staff in the public and private sectors:
- Benefitting from preferential rates on our ILM accredited and other leadership and management programmes offered by the Black Leadership Initiative® (BLI);
- Benefitting from reduced rates for advertising job vacancies on the NBP website;
- Gaining access to our unique Talent Management Service;
- Offering support and networking opportunities for your BME staff through our national and regional staff;
- Raising the profile of your organisation to potential BME employees; and
- Able to utilise confidential casework and mediation support from the NBP.

”





Corporate Membership Subscription Rates for 2008-2009

Voluntary & Community Organisations £275

Other Organisations £550

www.nbp.org.uk

t. 01902 715309

f. 01902 426378

Wolverhampton Science Park
Glaisher Drive
Wolverhampton
West Midlands
WV10 9RU

more than a network